

Giovanni Simone Mayr

(1763 - 1845)

3

BAGATELLE

for

Flute, Clarinet and Bassoon

2014

www.adrianoamore.it

3 BAGATELLE

for Flute, Clarinet and Bassoon

Revisione:
Adriano Amore

Giovanni Simone Mayr
(1763 - 1845)

N° 1 (Allegretto non tanto)

Flute *p*

Clarinet in B \flat *p*

Bassoon *p*

Measures 1-9. Flute part features a triplet of eighth notes in measure 3. Clarinet and Bassoon parts provide harmonic support with sustained notes and rhythmic patterns.

Fl. *p*

B \flat Cl. *p*

Bsn. *p*

Measures 10-17. Flute part includes a triplet of eighth notes in measure 14. Clarinet and Bassoon parts continue with rhythmic accompaniment.

Fl. *f*

B \flat Cl. *f*

Bsn. *f*

Measures 18-24. This section is marked *f* (forte). Flute part features a triplet of eighth notes in measure 21. Clarinet and Bassoon parts play a steady eighth-note accompaniment.

Fl. *p*

B \flat Cl. *p*

Bsn. *p*

Measures 25-31. This section is marked *p* (piano). Flute part features a triplet of eighth notes in measure 25. Clarinet and Bassoon parts continue with rhythmic accompaniment.

33

Fl.

B♭ Cl.

Bsn.

41

Fl.

B♭ Cl.

Bsn.

f

47

Fl.

B♭ Cl.

Bsn.

p

55

Fl.

B♭ Cl.

Bsn.

f

62

Fl.

B♭ Cl.

Bsn.

p

f

3 BAGATELLE

for Flute, Clarinet and Bassoon

Revisione:
Adriano Amore

Giovanni Simone Mayr
(1763 - 1845)

N° 2 (Tempo di marcia)

Flute

Clarinet in B \flat

Bassoon

Fl.

B \flat Cl.

Bsn.

Fl.

B \flat Cl.

Bsn.

Fl.

B \flat Cl.

Bsn.

f *p* *f* *p* *f* *p*

f *pp* *f* *f* *p* *f* *p*

f *pp* *f* *f* *p* *f* *pp* *f*

f *pp* *f* *p* *f* *pp* *f*

dolce *f* *p* *f* *pp* *f*

dolce *f*

p

21

Fl. *p* *f* *p* *f*

B♭ Cl. *f* *p* *f* *p* *f* dolce

Bsn. *f* *p* *f* *p* *f* *p*

Detailed description: This system covers measures 21 to 25. The Flute part begins with a piano (*p*) dynamic, followed by a forte (*f*) dynamic, then returns to piano (*p*), and finally a crescendo to forte (*f*). The B♭ Clarinet part starts with forte (*f*), moves to piano (*p*), then forte (*f*), piano (*p*), and forte (*f*), ending with a *dolce* marking. The Bassoon part follows a similar pattern of *f*, *p*, *f*, *p*, and *f*.

26

Fl. dolce *f* *p* *f* *p*

B♭ Cl. *f* *p* *f* *p*

Bsn. *f* *p* *f* *p*

Detailed description: This system covers measures 26 to 30. The Flute part starts with a *dolce* marking, then moves to forte (*f*), piano (*p*), forte (*f*), and piano (*p*). The B♭ Clarinet part has dynamics of *f*, *p*, *f*, and *p*. The Bassoon part has dynamics of *f*, *p*, *f*, and *p*.

31

Fl. *f* *p* *f*

B♭ Cl. *f* *p* *f*

Bsn. *f* *p* *f*

Detailed description: This system covers measures 31 to 35. The Flute part starts with a forte (*f*) dynamic, then moves to piano (*p*), and back to forte (*f*). The B♭ Clarinet part has dynamics of *f*, *p*, and *f*. The Bassoon part has dynamics of *f*, *p*, and *f*.

36

Fl. *p*

B♭ Cl. *tr* *mp*

Bsn. *p*

Detailed description: This system covers measures 36 to 40. The Flute part starts with a piano (*p*) dynamic. The B♭ Clarinet part features a trill (*tr*) and a mezzo-piano (*mp*) dynamic. The Bassoon part starts with a piano (*p*) dynamic.

41

Fl. *f* *f* *p*

B♭ Cl. *f* *p* *f* *tr* *mp*

Bsn. *f* *p* *f* *mf*

Detailed description: This system covers measures 41 to 45. The Flute part has dynamics of *f*, *f*, and *p*. The B♭ Clarinet part has dynamics of *f*, *p*, *f*, a trill (*tr*), and *mp*. The Bassoon part has dynamics of *f*, *p*, *f*, and *mf*.

3 BAGATELLE

46

Fl. *mf* *f*

B♭ Cl. *f* *p*

Bsn. *f* *p*

51

Fl. *f* *p* *f* *p*

B♭ Cl. *f* *f* *p*

Bsn. *f* *p* *f* *p*

56

Fl. *f* *p* *f* *p*

B♭ Cl. *f* *p* *f* *p*

Bsn. *f* *p* *f* *p*

61

Fl. *f* *f* *ff*

B♭ Cl. *f* *f* *ff*

Bsn. *f* *f* *ff*

Revisione:
Adriano Amore

3 BAGATELLE

for Flute, Clarinet and Bassoon

Giovanni Simone Mayr
(1763 - 1845)

N° 3 (Andantino con variazioni)

Flute

Clarinet in B \flat

Bassoon

Fl.

B \flat Cl.

Bsn.

Fl.

B \flat Cl.

Bsn.

Var. I

Fl.

B \flat Cl.

Bsn.

21

Fl.

B♭ Cl.

Bsn.

25

Fl.

B♭ Cl.

Bsn.

29

Fl.

B♭ Cl.

Bsn.

33

Var. II

Fl.

B♭ Cl.

Bsn.

espr.

38

Fl.

B♭ Cl.

Bsn.

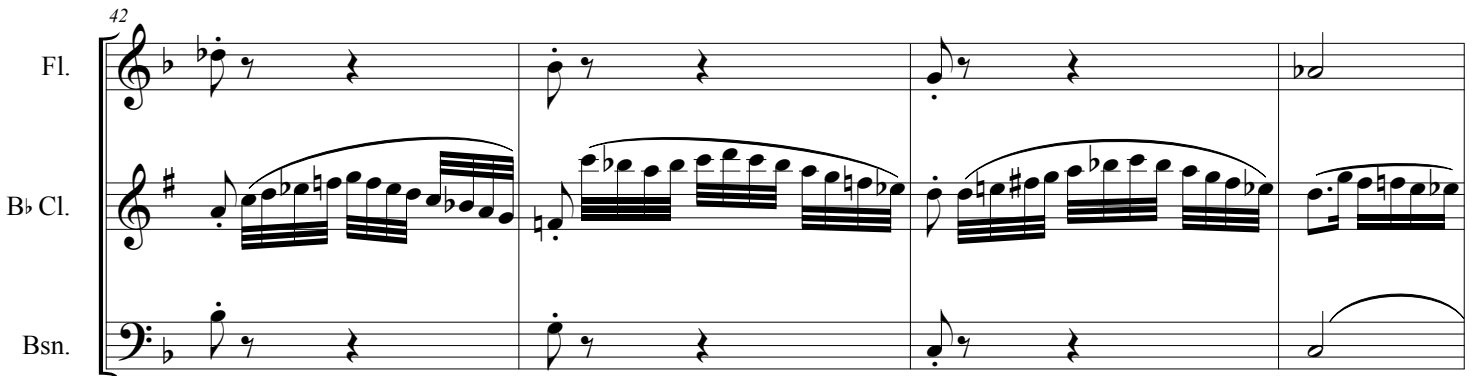


42

Fl.

B♭ Cl.

Bsn.

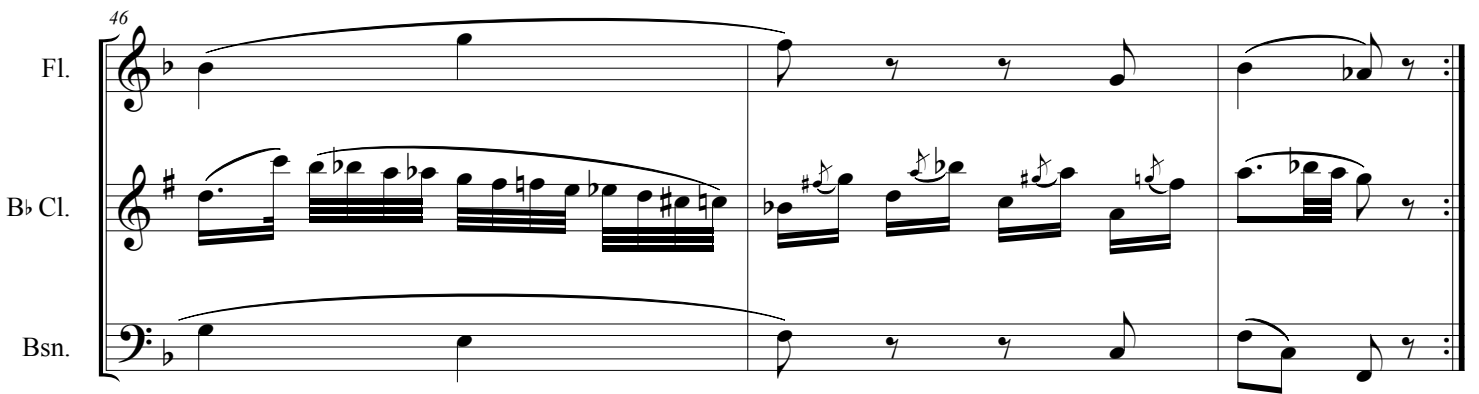


46

Fl.

B♭ Cl.

Bsn.



Var. III

49

Fl.

B♭ Cl.

Bsn.



52

Fl.
B♭ Cl.
Bsn.

This system contains measures 52, 53, and 54. The Flute part features a complex melodic line with many slurs and ties. The Clarinet and Bassoon parts have a more rhythmic accompaniment with some slurs.

55

Fl.
B♭ Cl.
Bsn.

This system contains measures 55, 56, and 57. Measure 57 includes a repeat sign. The Flute part continues with its intricate melodic pattern. The Clarinet and Bassoon parts provide harmonic support with some melodic movement.

58

Fl.
B♭ Cl.
Bsn.

This system contains measures 58 and 59. The Flute part has a long, sweeping slur across both measures. The Clarinet and Bassoon parts play sustained notes with long slurs.

60

Fl.
B♭ Cl.
Bsn.

This system contains measures 60 and 61. The Flute part continues with its fast, melodic line. The Clarinet and Bassoon parts have a rhythmic accompaniment.

3 BAGATELLE

62

Fl.

B♭ Cl.

Bsn.

65

Var. IV

Fl.

B♭ Cl.

Bsn.

68

Fl.

B♭ Cl.

Bsn.

70

Fl.

B♭ Cl.

Bsn.

73

Fl. B♭ Cl. Bsn.

This system covers measures 73 to 75. The Flute part has rests in measures 73 and 74, followed by a sixteenth-note pattern in measure 75. The B♭ Clarinet part has a quarter-note pattern in measure 73, a sixteenth-note pattern in measure 74, and a quarter-note pattern in measure 75. The Bassoon part has a sixteenth-note pattern in measure 73, a quarter-note pattern in measure 74, and a quarter-note pattern in measure 75.

76

Fl. B♭ Cl. Bsn.

This system covers measures 76 to 77. The Flute part has a quarter-note pattern in measure 76 and a sixteenth-note pattern in measure 77. The B♭ Clarinet part has a sixteenth-note pattern in measure 76 and a quarter-note pattern in measure 77. The Bassoon part has a quarter-note pattern in measure 76 and a sixteenth-note pattern in measure 77.

78

Fl. B♭ Cl. Bsn.

This system covers measures 78 to 80. The Flute part has a sixteenth-note pattern in measure 78, a quarter-note pattern in measure 79, and a quarter-note pattern in measure 80. The B♭ Clarinet part has a sixteenth-note pattern in measure 78, a quarter-note pattern in measure 79, and a quarter-note pattern in measure 80. The Bassoon part has a sixteenth-note pattern in measure 78, a quarter-note pattern in measure 79, and a quarter-note pattern in measure 80.

81

Fl. B♭ Cl. Bsn.

fp *fp* *fp*

This system covers measures 81 to 83. The Flute part has a sixteenth-note pattern in measure 81, a quarter-note pattern in measure 82, and a sixteenth-note pattern in measure 83. The B♭ Clarinet part has a quarter-note pattern in measure 81, a sixteenth-note pattern in measure 82, and a quarter-note pattern in measure 83. The Bassoon part has a quarter-note pattern in measure 81, a quarter-note pattern in measure 82, and a quarter-note pattern in measure 83.

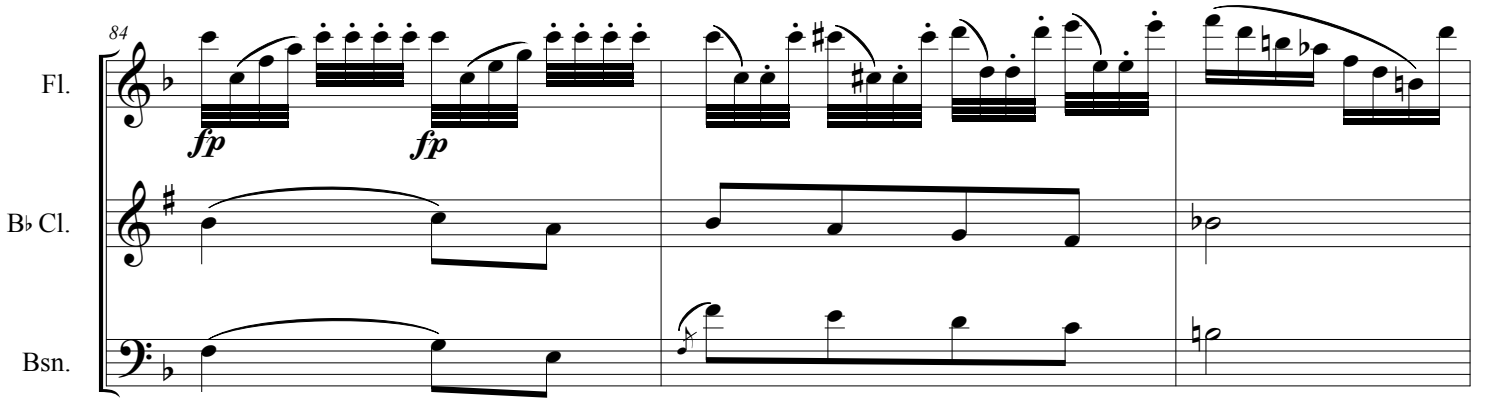
3 BAGATELLE

84

Fl. *fp* *fp*

B \flat Cl.

Bsn.



87

Fl.

B \flat Cl.

Bsn.

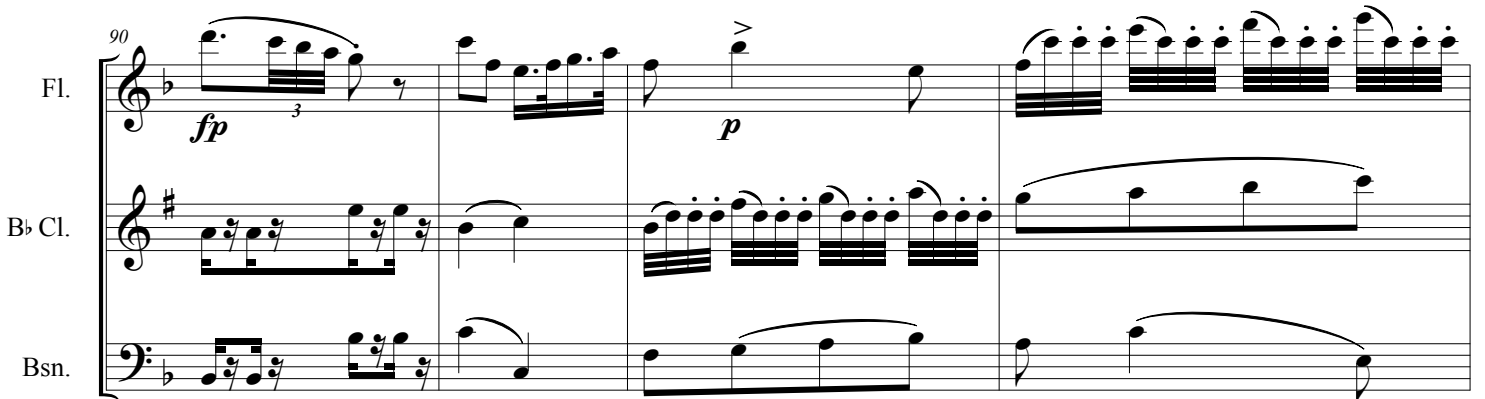


90

Fl. *fp* *p*

B \flat Cl.

Bsn.

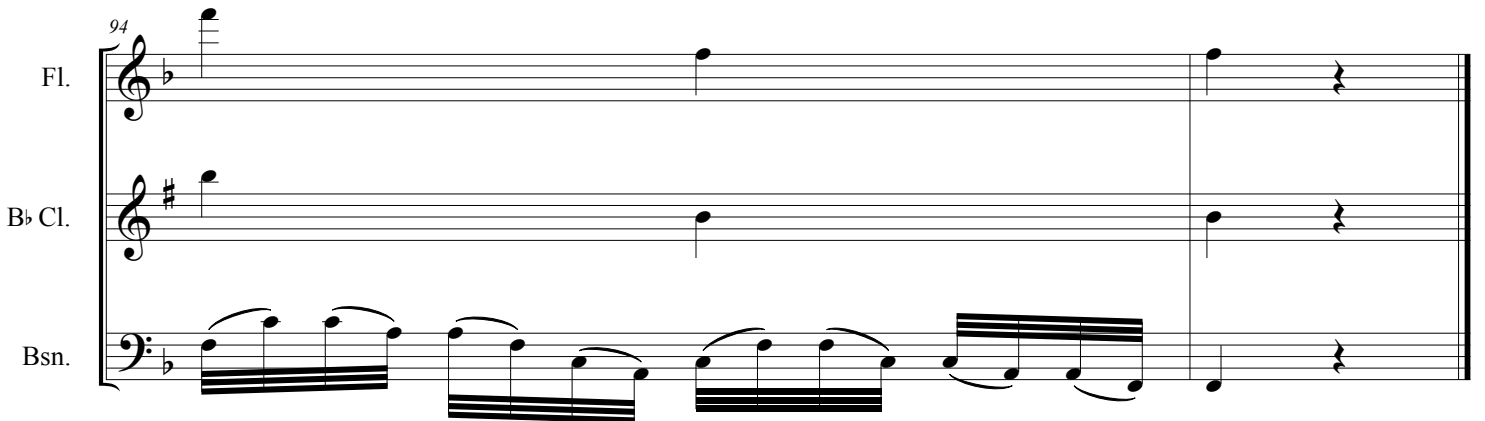


94

Fl.

B \flat Cl.

Bsn.



3 BAGATELLE

FLUTE

for Flute, Clarinet and Bassoon

Giovanni Simone Mayr
(1763 - 1845)

Rev. : Adriano Amore

N° 1 (Allegretto non tanto)

The musical score for N° 1 (Allegretto non tanto) is written for Flute, Clarinet, and Bassoon. It consists of nine staves of music in 2/4 time. The key signature has one flat (B-flat). The score includes various dynamics such as *p* (piano) and *f* (forte), and articulations like accents, slurs, and triplets. The piece begins with a piano (*p*) dynamic and a triplet of eighth notes. The first staff ends at measure 9. The second staff starts at measure 10 and ends at measure 16. The third staff starts at measure 17 and ends at measure 23. The fourth staff starts at measure 24 and ends at measure 32. The fifth staff starts at measure 33 and ends at measure 40. The sixth staff starts at measure 41 and ends at measure 46. The seventh staff starts at measure 47 and ends at measure 54. The eighth staff starts at measure 55 and ends at measure 60. The ninth staff starts at measure 61 and ends at measure 68. The score concludes with a final cadence.

3 BAGATELLE

FLUTE

for Flute, Clarinet and Bassoon

Giovanni Simone Mayr
(1763 - 1845)

Rev. : Adriano Amore

N° 2 (Tempo di marcia)

f *p* *f* *p* *f* *p* *f* *pp* *f*

8 *f* *p* *f* *p* *f* *p* *f* *pp*

15 *f* dolce *f*

21 *p* *f* *p* *f* dolce

27 *f* *p* *f* *p* *f*

32 *p* *f* *p*

38 *f* *f*

44 *p* *mf*

49 *f* *f* *p*

54 *f* *p* *p* *f* *p* *f* *p*

60 *f* *f* *ff*

3 BAGATELLE

for Flute, Clarinet and Bassoon

FLUTE

Giovanni Simone Mayr
(1763 - 1845)

Rev. : Adriano Amore

N° 3 (Andantino con variazioni)



Var. I



Var. II



Var. III



58



60



62



65 Var. IV



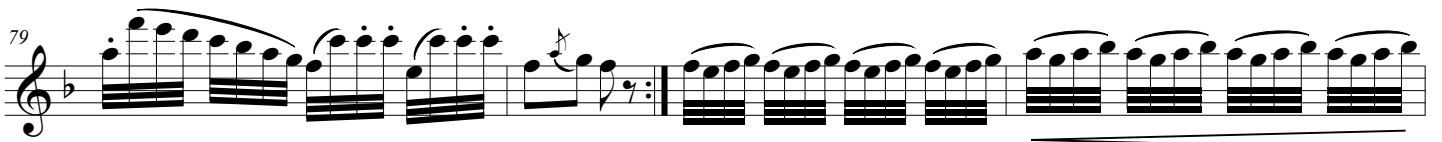
69



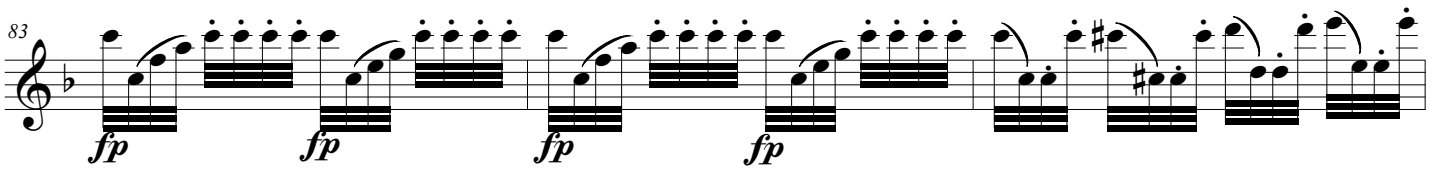
73



79



83



86



90



CLARINET

3 BAGATELLE

for Flute, Clarinet and Bassoon

Giovanni Simone Mayr
(1763 - 1845)

Rev. : Adriano Amore

N° 2 (Tempo di marcia)

f *p* *f* *p* *dolce* *f* *p* *f* *pp*

7 *f* *f* *p* *f* *p* *dolce*

13 *f* *p* *f* *pp* *f* *dolce*

19 *f* *p* *f* *p* *f* *dolce*

25 *f* *p* *f* *p*

31 *f* *p* *f* *tr* *mp*

38 *f* *p*

44 *f* *tr* *mp* *f*

50 *p* *f* *tr* *f* *p*

56 *f* *p* *f* *p*

61 *f* *f* *ff*

3 BAGATELLE

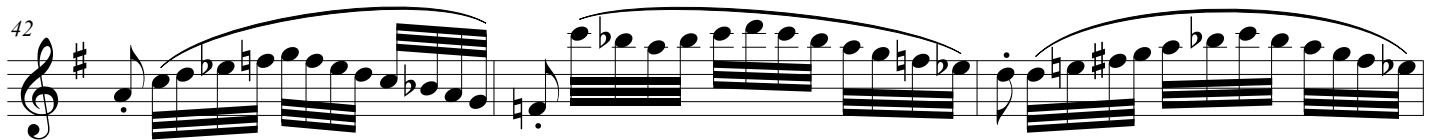
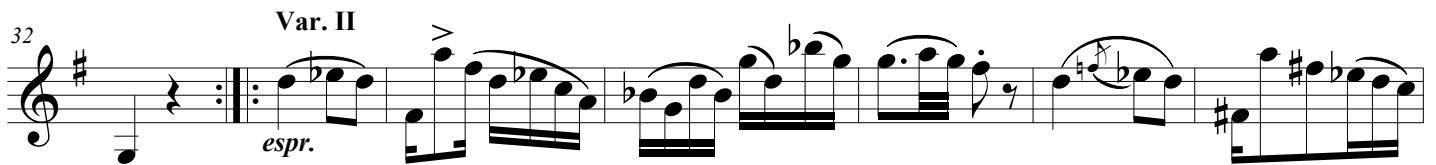
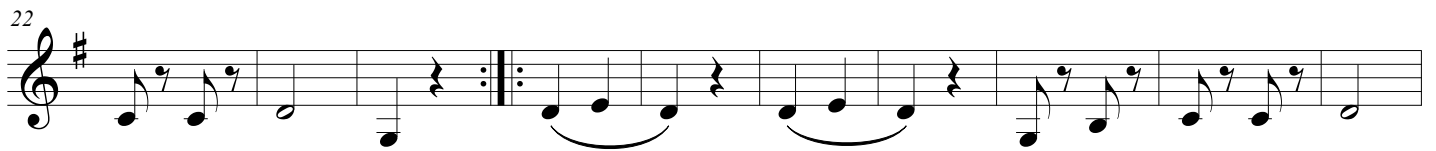
CLARINET

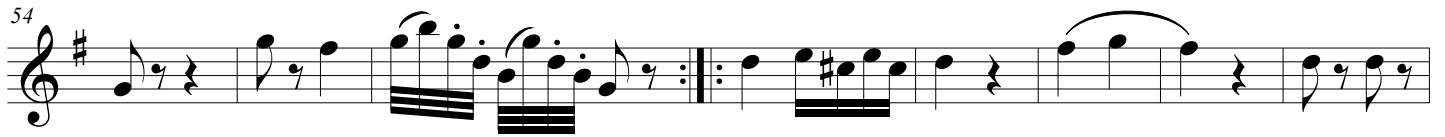
for Flute, Clarinet and Bassoon

Giovanni Simone Mayr
(1763 - 1845)

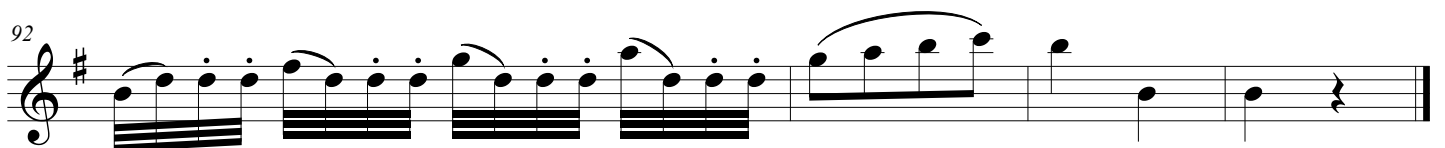
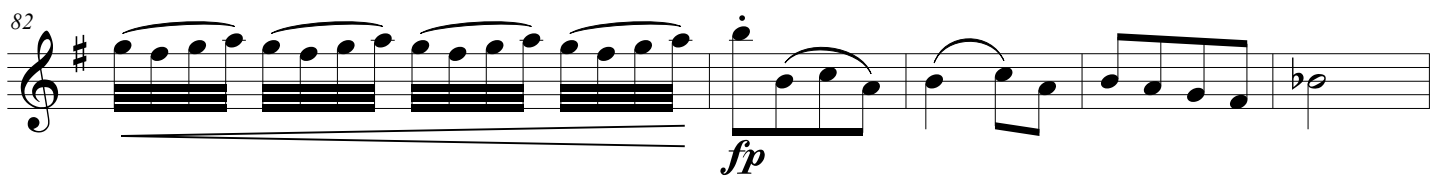
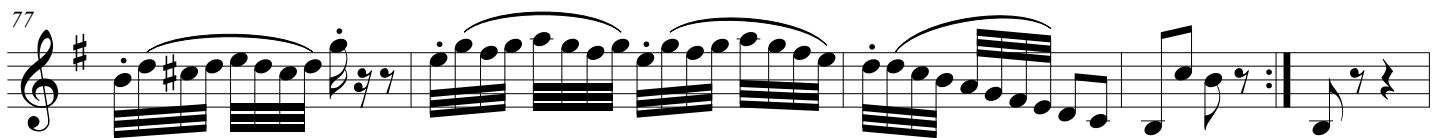
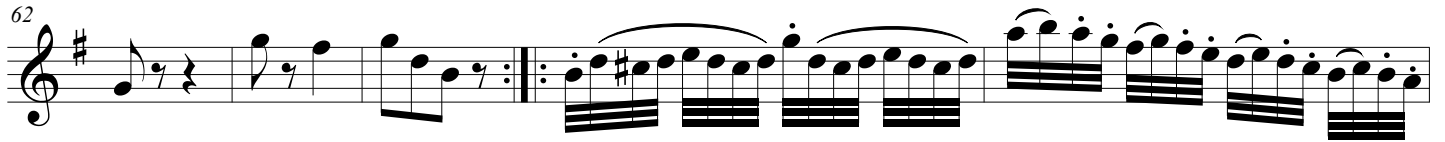
Rev. : Adriano Amore

N° 3 (Andantino con variazioni)





Var. IV



3 BAGATELLE

BASSOON

for Flute, Clarinet and Bassoon

Giovanni Simone Mayr
(1763 - 1845)

Rev. : Adriano Amore

N° 1 (Allegretto non tanto)

Measures 1-10 of the first bagatelle. The music is in bass clef, 2/4 time, and B-flat major. It begins with a piano (*p*) dynamic. The melody consists of eighth and sixteenth notes, with some rests.

Measures 11-19. The music continues with eighth and sixteenth notes. A crescendo hairpin is visible at the end of the line.

Measures 20-28. Measure 20 features a triplet of eighth notes marked with an accent (>) and a forte (*f*) dynamic. The music then returns to a piano (*p*) dynamic.

Measures 29-38. This section features a continuous sixteenth-note pattern. The dynamics fluctuate between piano and forte.

Measures 39-46. Measure 39 has a forte (*f*) dynamic. The music includes sixteenth-note runs and rests.

Measures 47-54. Measure 47 is marked piano (*p*). The music features a triplet of eighth notes in measure 50.

Measures 55-62. Measure 55 has a forte (*f*) dynamic. The music includes a triplet of eighth notes and a crescendo hairpin.

Measures 63-70. Measures 64-66 feature triplet markings over eighth notes. The music concludes with a forte (*f*) dynamic.

3 BAGATELLE

for Flute, Clarinet and Bassoon

BASSOON

Giovanni Simone Mayr
(1763 - 1845)
Rev. : Adriano Amore

N° 2 (Tempo di marcia)

f *p* *f* *p* *f* *p* *f* *pp*

7 *f* *f* *p* *f* *p*

13 *f* *p* *f* *pp* *f* *p*

19 *f* *p* *f* *p* *f* *p*

26 *f* *p* *f* *p* *f* *p*

34 *f* *p*

40 *f* *p* *f* *mf*

46 *f* *p*

52 *f* *p* *f* *p* *f* *p* *f*

58 *p* *f* *f* *ff*

3 BAGATELLE

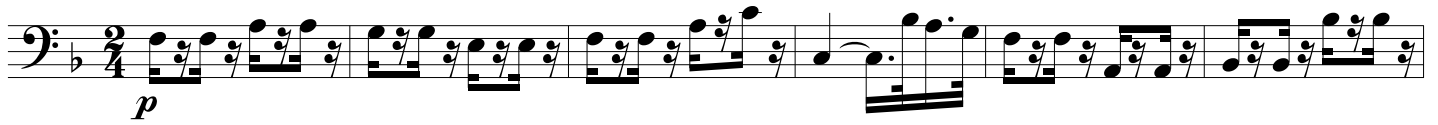
for Flute, Clarinet and Bassoon

BASSOON

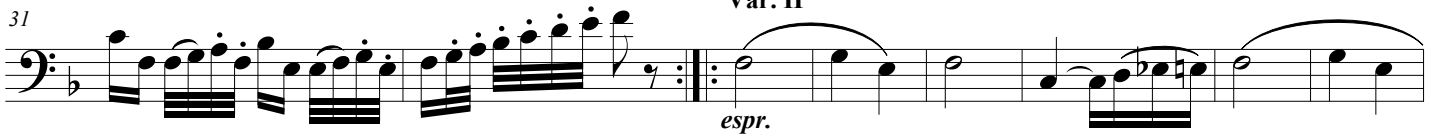
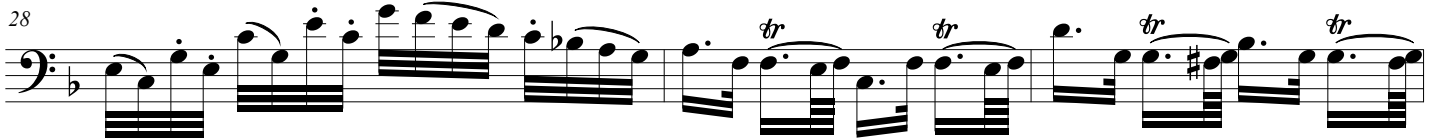
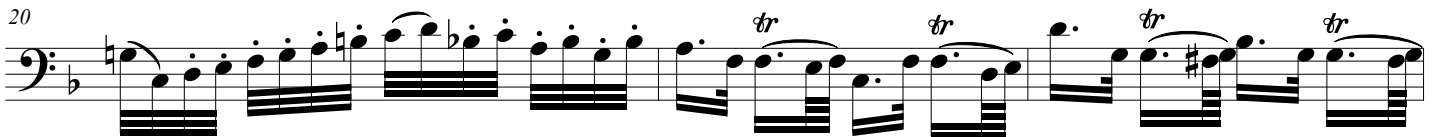
Giovanni Simone Mayr
(1763 - 1845)

Rev. : Adriano Amore

N° 3 (Andantino con variazioni)



Var. I



Var. III

49

58

Var. IV

65

69

72

77

80

fp

87

93